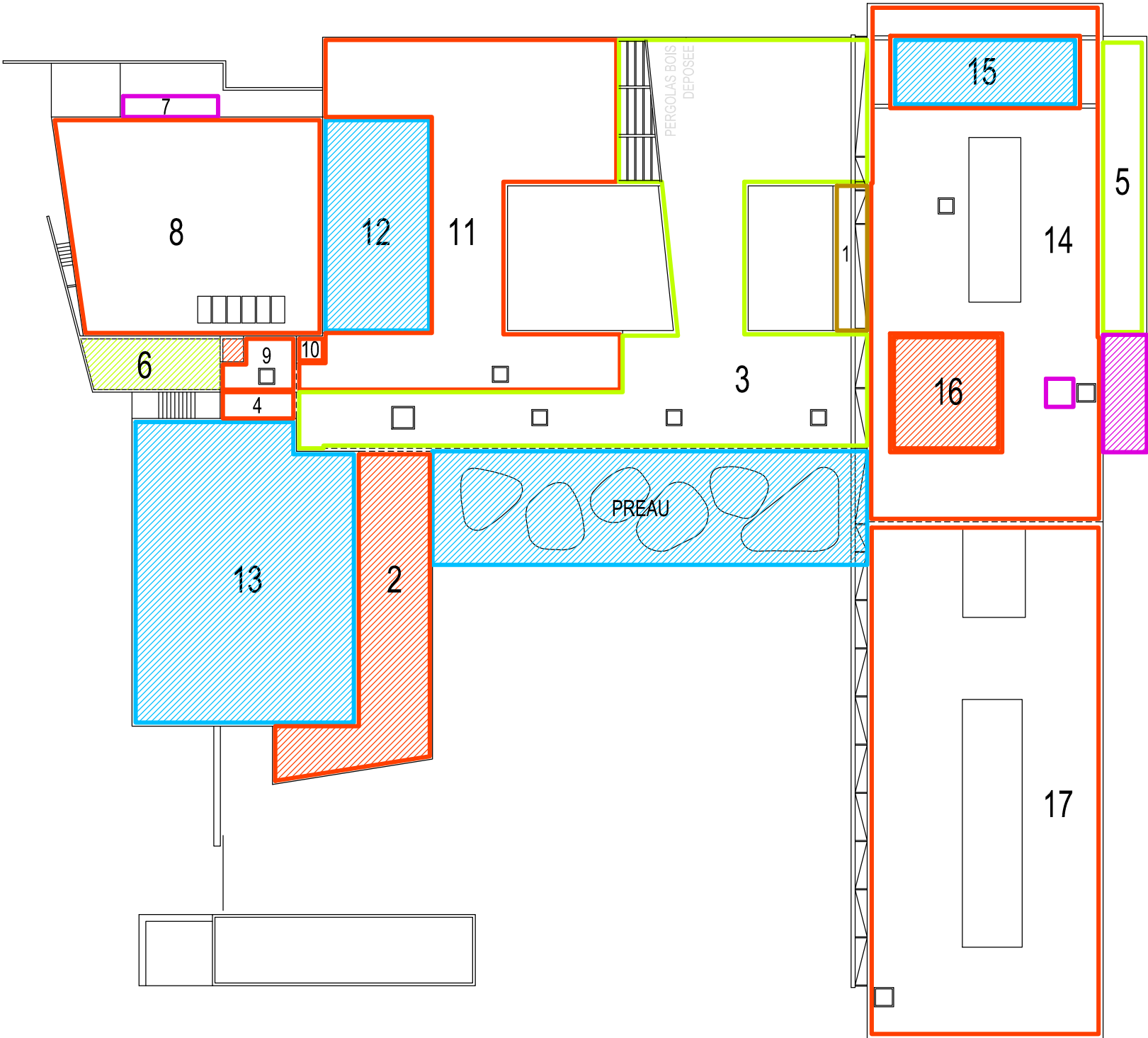
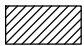



# SCHEMA DE LOCALISATION DES TOITURES CONSERVEES

- ISOLATION PUR 150MM + ETANCHEITE BI-COUCHE + PROTECTION GRAVILLONS
- ISOLATION PUR 150MM + ETANCHEITE BI-COUCHE + VEGETALISATION
- MEMBRANE PVC
- ISOLATION PUR 150MM + ETANCHEITE BI-COUCHE + DALLETTES SUR PLOTS
- ETANCHEITE AUTOPROTEGEE
- REPERAGE TOITURES CONSERVEES





# SCHEMA DE LOCALISATION DES TOITURES A REFAIRE A NEUF

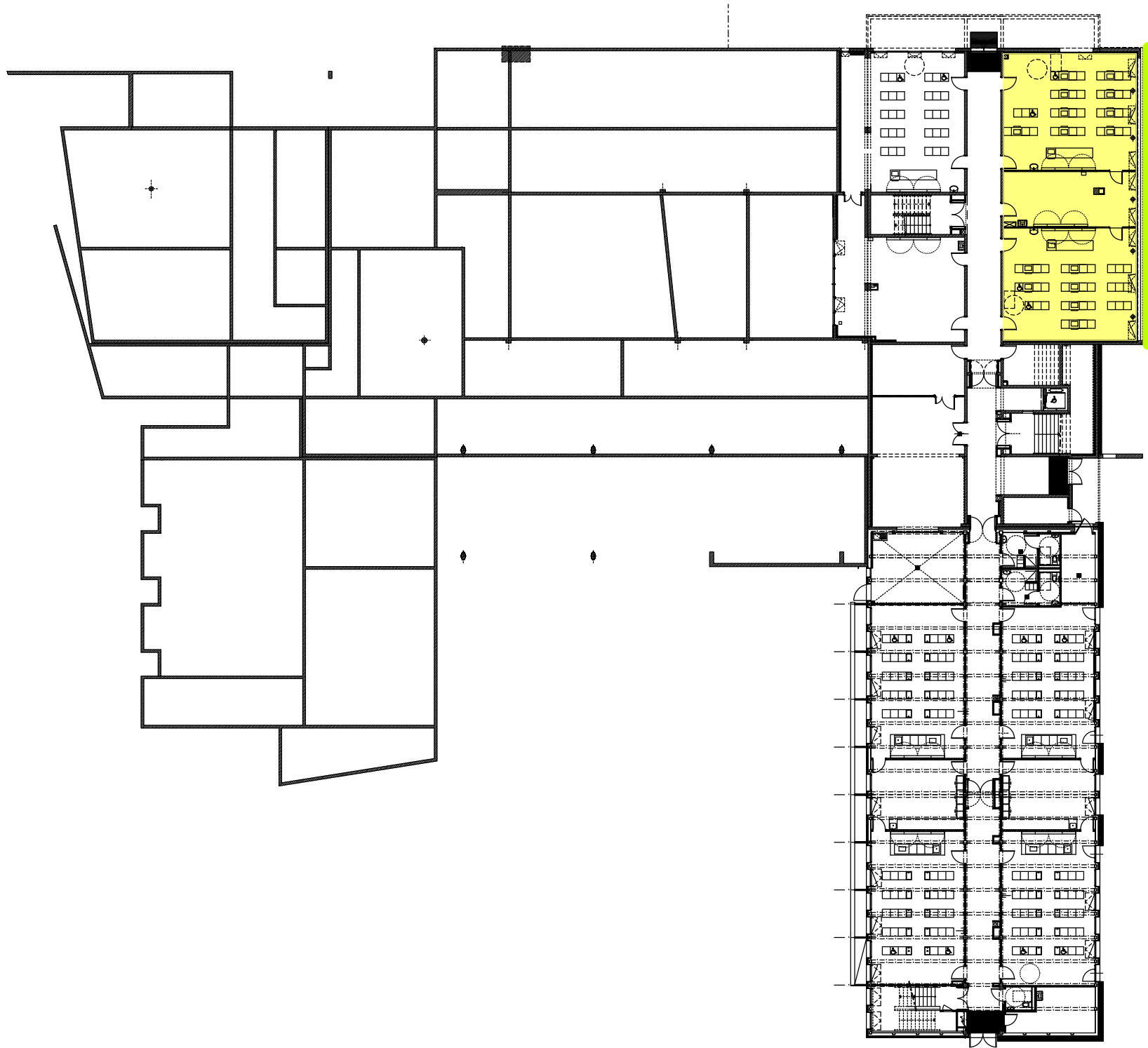
- ISOLATION PUR 150MM + ETANCHEITE BI-COUCHE + PROTECTION GRAVILLONS
- ISOLATION PUR 150MM + ETANCHEITE BI-COUCHE + VEGETALISATION
- MEMBRANE PVC
- ISOLATION PUR 150MM + ETANCHEITE BI-COUCHE + DALLETTES SUR PLOTS
- ETANCHEITE AUTOPROTEGEE
-  REPERAGE TOITURES REFAITES A NEUF
-  EQUIPEMENTS TECHNIQUES



# REZ-DE-JARDIN



## SCHEMA DE LOCALISATION DES PROTECTIONS SOLAIRES

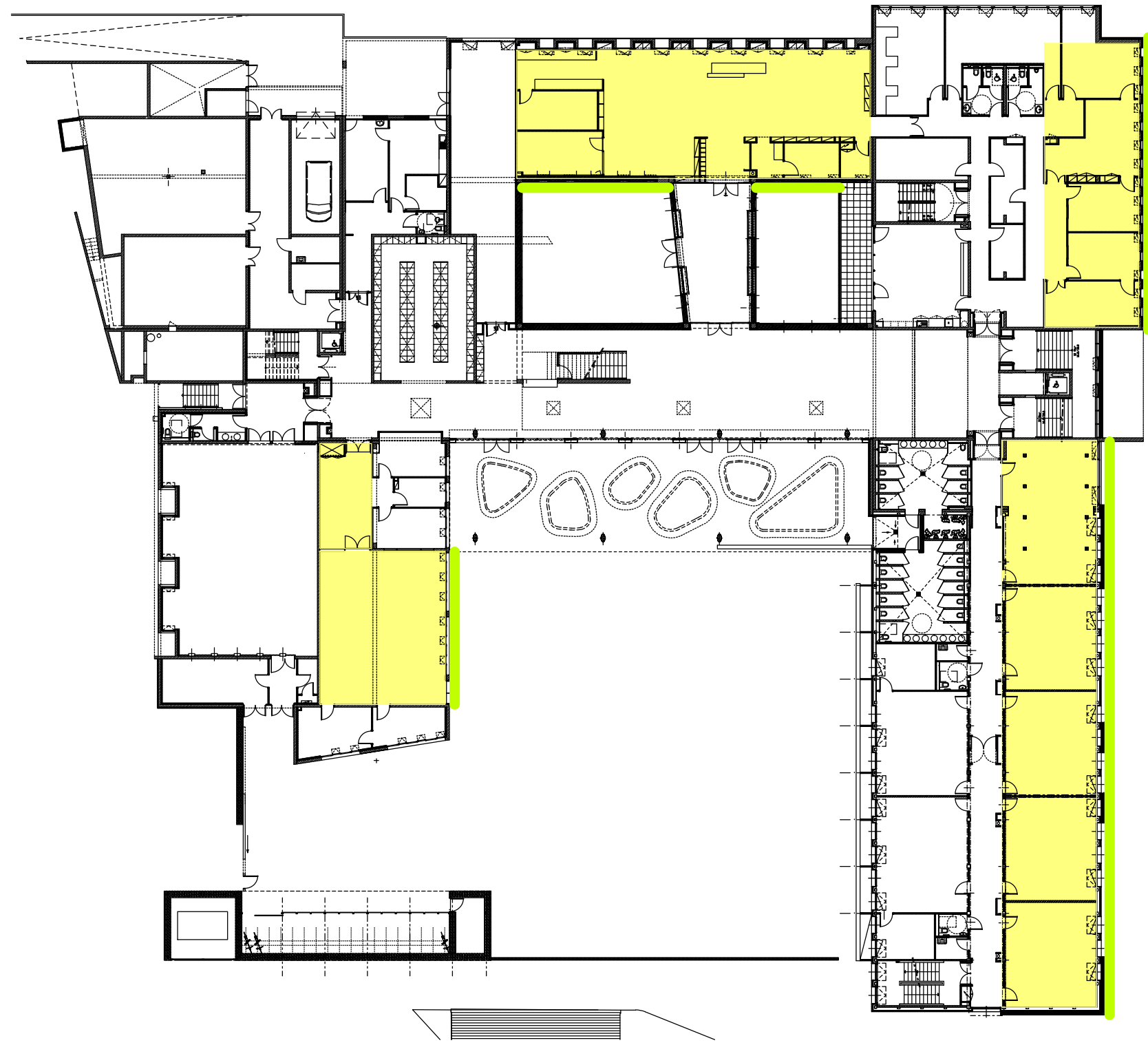
-  LOCAUX AVEC SURCHAUFFE
-  PROTECTION SOLAIRE DU TYPE STORE BSO



# REZ-DE-CHAUSSEE



## SCHEMA DE LOCALISATION DES PROTECTIONS SOLAIRES

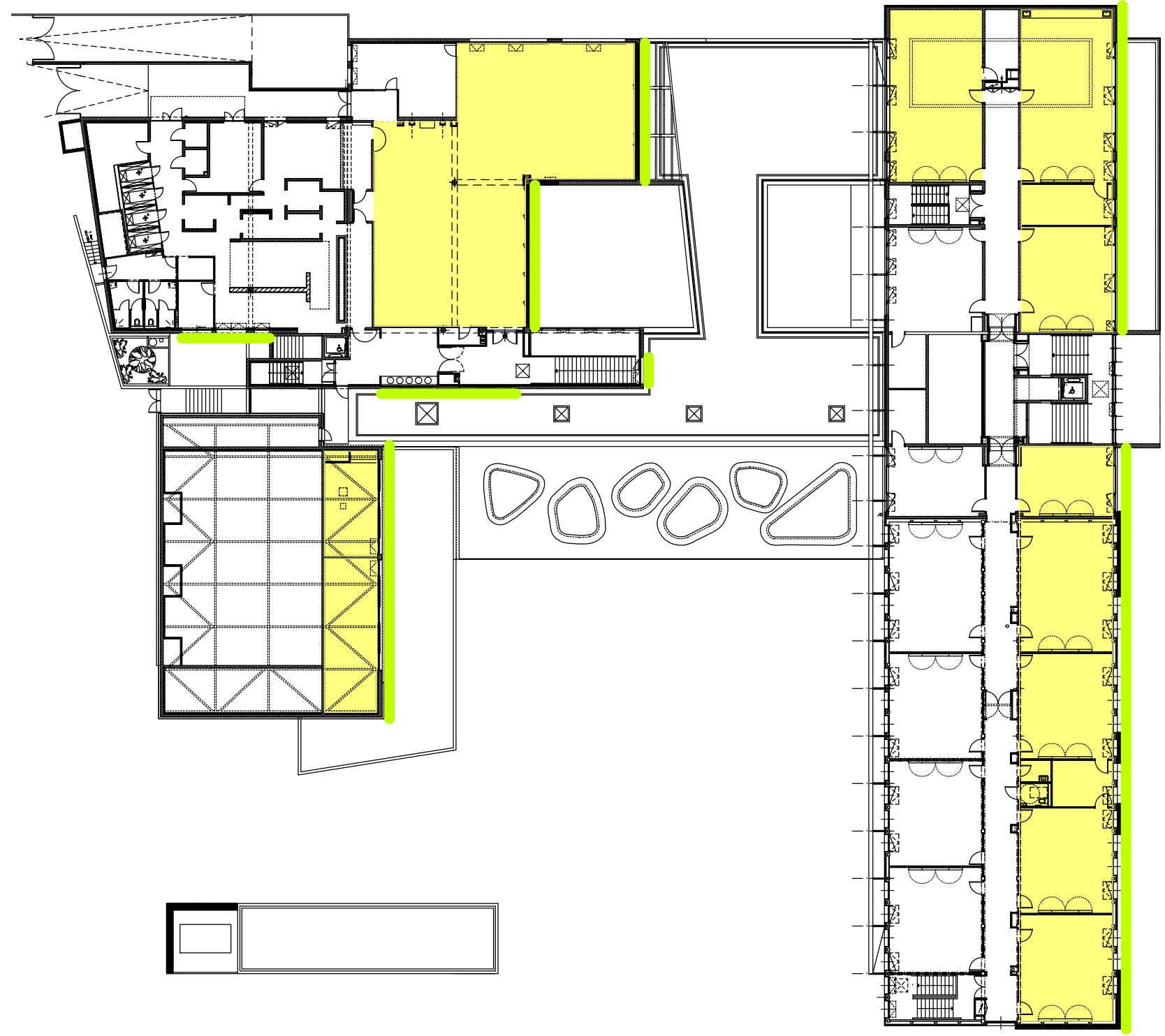
-  LOCAUX AVEC SURCHAUFFE
-  PROTECTION SOLAIRE DU TYPE STORE BSO



# ETAGE



## SCHEMA DE LOCALISATION DES PROTECTIONS SOLAIRES

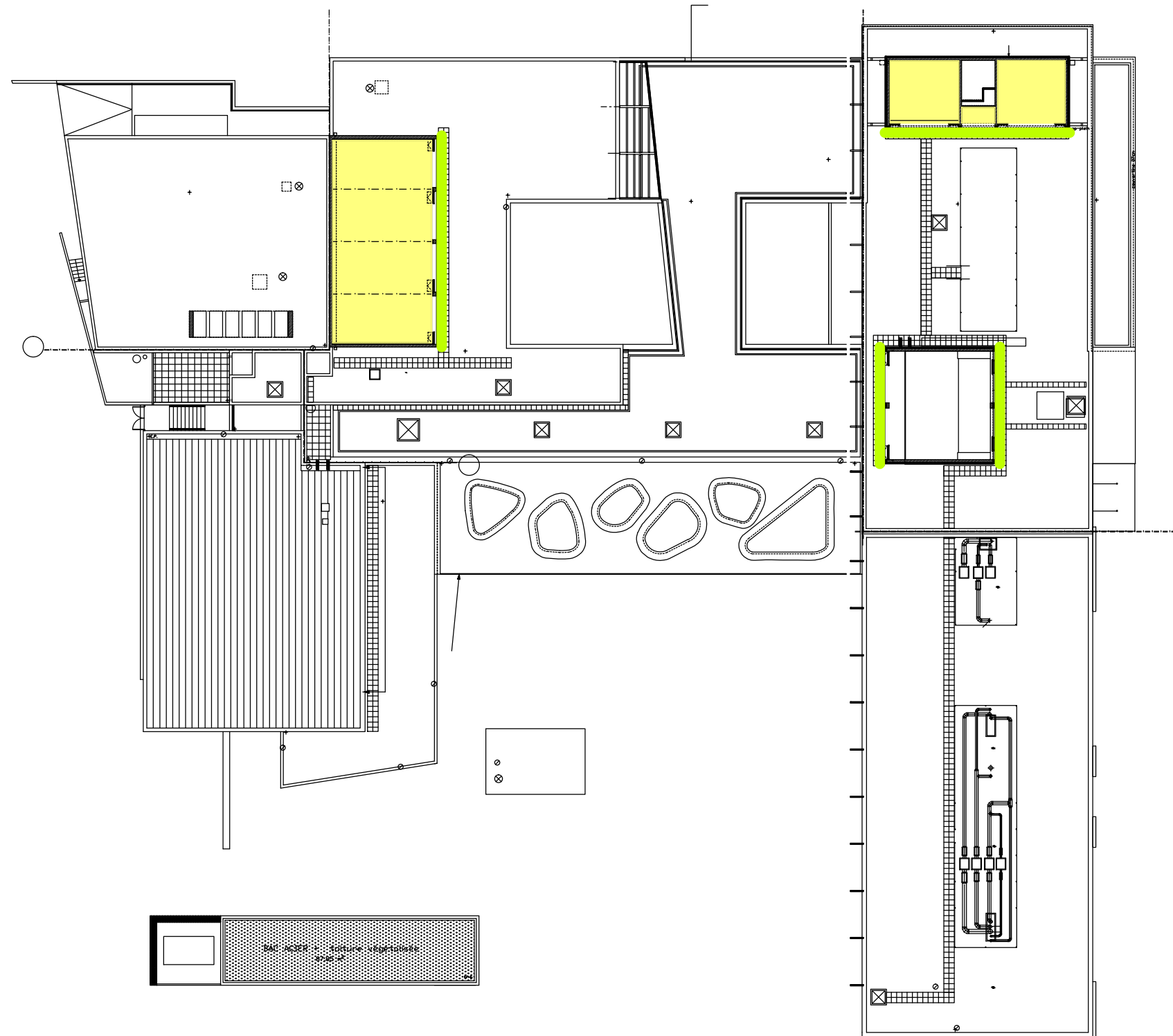
-  LOCAUX AVEC SURCHAUFFE
-  PROTECTION SOLAIRE DU TYPE STORE BSO

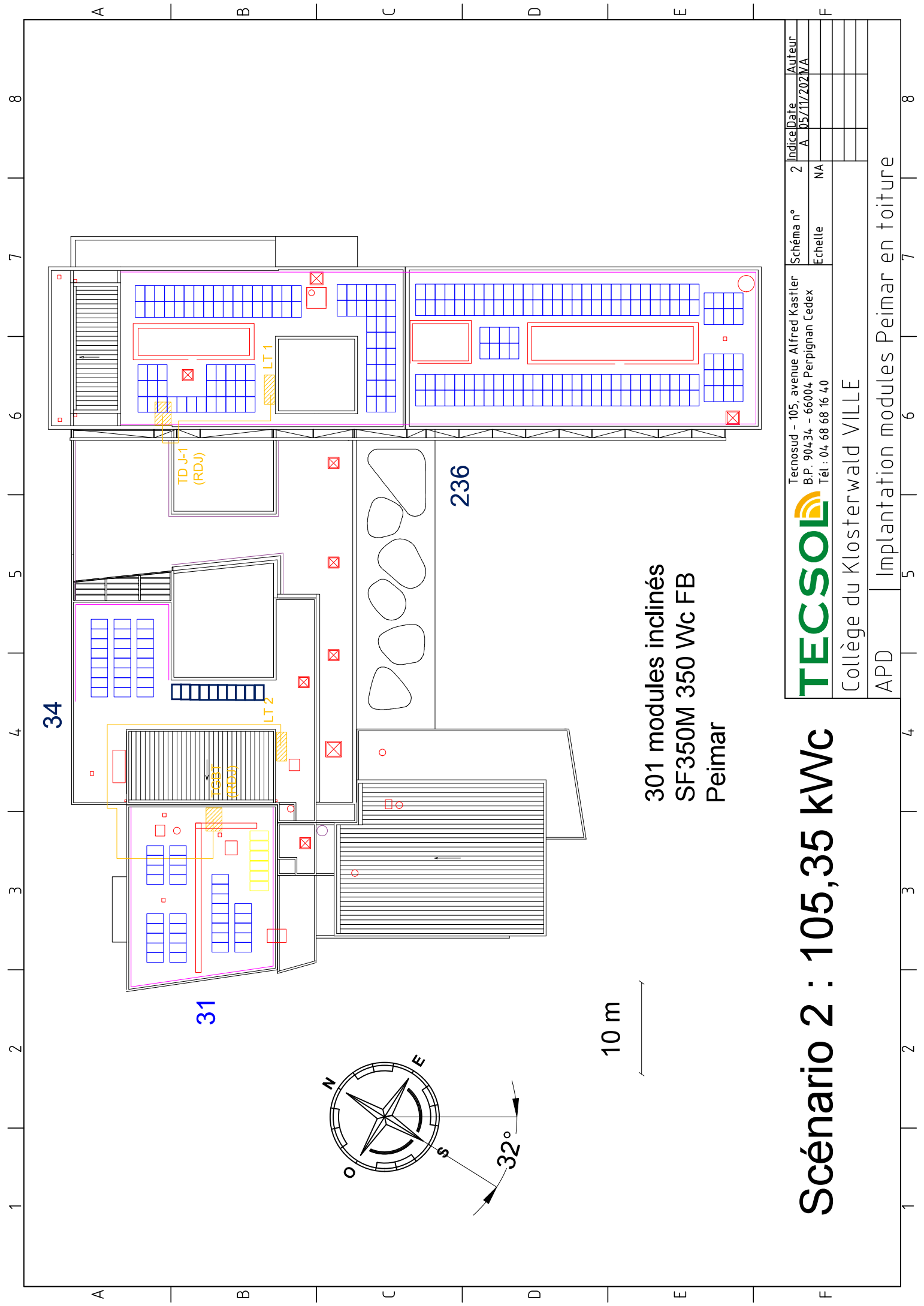


# TOITURE

## SCHEMA DE LOCALISATION DES PROTECTIONS SOLAIRES

-  LOCAUX AVEC SURCHAUFFE
-  PROTECTION SOLAIRE DU TYPE STORE BSO





301 modules inclinés  
SF350M 350 Wc FB  
Peimar

# Scénario 2 : 105,35 kWc

|  |                              |  |                      |         |                             |             |
|--|------------------------------|--|----------------------|---------|-----------------------------|-------------|
| <b>TECSOL</b><br>Tecnosud - 105, avenue Alfred Kastler<br>B.P. 90434 - 66004 Perpignan Cedex<br>Tél : 04 68 68 16 40 | Collège du Klosterwald VILLE |  | Schéma n°<br>Echelle | 2<br>NA | Indice Date<br>A 05/11/2024 | Auteur<br>A |
|  | APD                          | Implantation modules Peimar en toiture |                      |         |                             |             |